

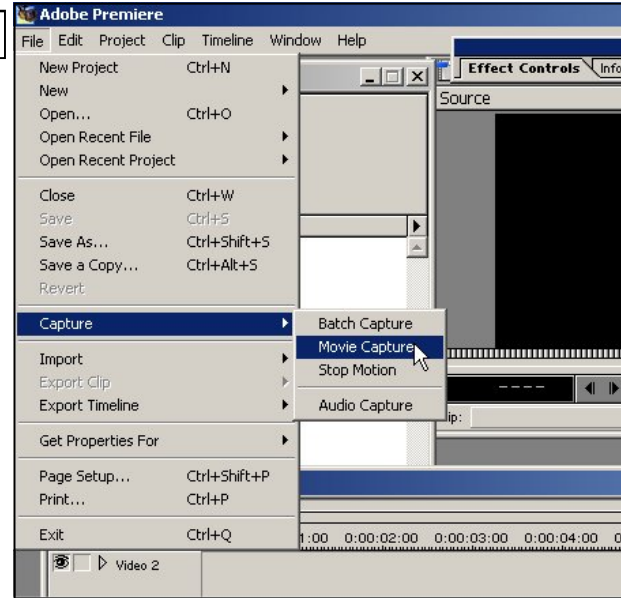
One of the most important things to bear in mind when dealing with computers is to maintain good housekeeping. Organise documents, music and video by putting them into pre-named folders so that you have a good chance of finding them at a later date.

Adobe Premiere video clips need to be stored in a specific place nominated by you. This means that the programme needs to be told the address and location of the "Scratch Disk".

In this example a Folder called "Our Holiday" has been created on the "F" drive.

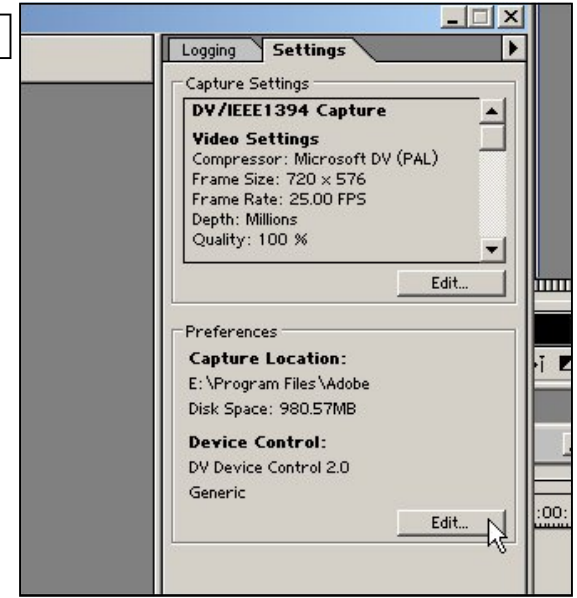
The following describes one of the ways to set the destination in Adobe Premiere 6.5 for video clips to be captured into that Folder.

FIG. 1



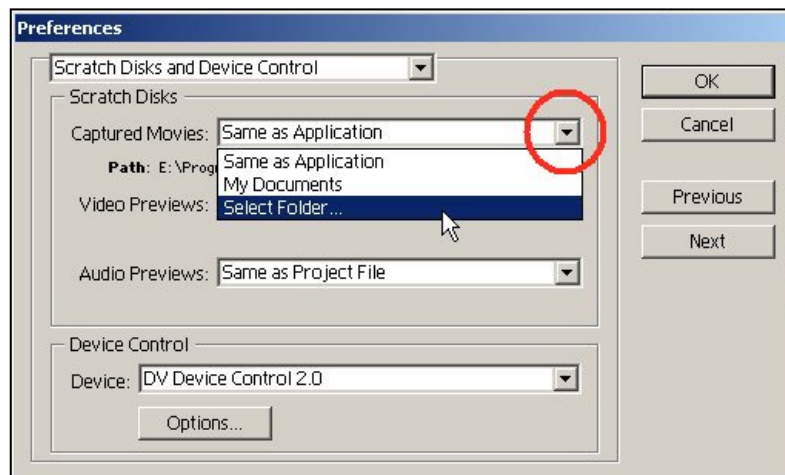
On the File Menu choose " Capture/Movie Capture".

FIG. 2



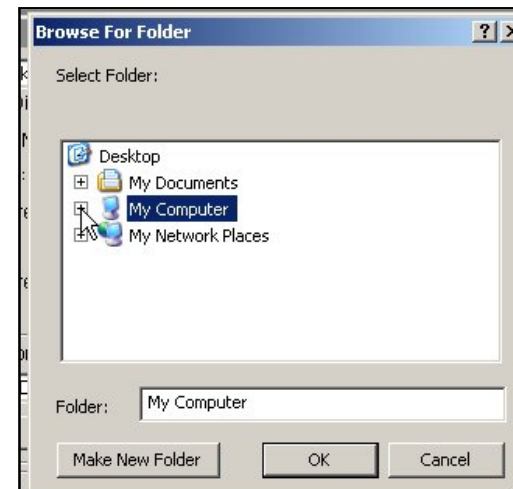
Next - Edit the Capture Location on the Capture Tool.

FIG. 3



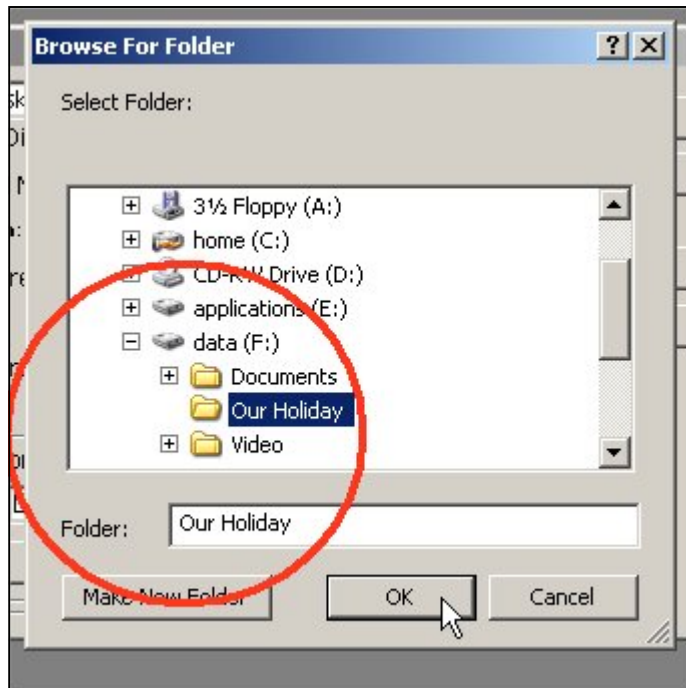
In Preferences Click the down arrow next to Captured Movies: circled in red and choose "SELECT FOLDER...".

FIG. 4



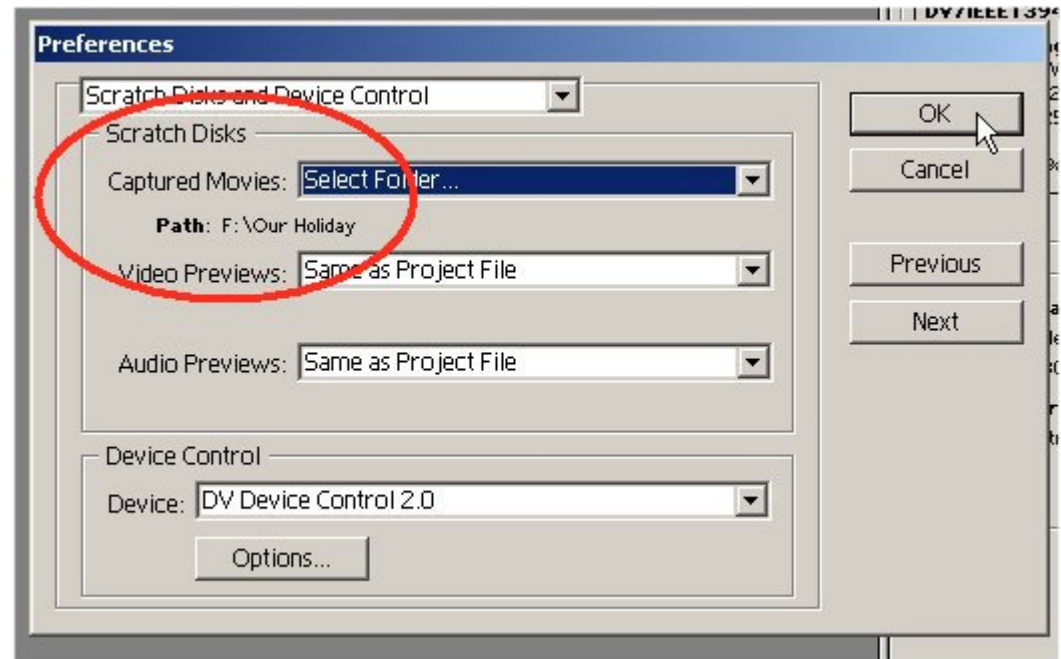
Click on the plus sign next to My Computer in the Browser Tool.

FIG. 5



At this stage you are able to see all the drives connected to your computer. Click on the plus sign next to the appropriate Drive Letter (In this case it is "F"). After clicking the plus sign on that drive all of its folders are revealed. Click on the relevant folder (In this case it is "Our Holiday"). You can now see that in the Folder: field "Our Holiday" is being displayed. Click OK and return to Preferences

FIG. 6



A summary of the new location for Captured Movies is highlighted in the ringed area. Before clicking OK make sure that the Video Previews: and the Audio Previews: fields are showing "Same as Project File" in both cases. Then when you come to save your actual Project saved it in the same folder. Thus when you have finished with your Project you can delete the folder with all its contents knowing that there are no other files relating to the project left cluttering up your computer.